

(-)

-->TQM-->



1.B1

	/	/	
			<p>1.</p> <ul style="list-style-type: none"> =1- =(- <p>2.)</p> <ul style="list-style-type: none"> =1-() ()CNC =1-xCNCx =÷ - x 100% <p>3.</p> <ul style="list-style-type: none"> =1÷-

			A00012023620237 6-77
			—
	Top10	Top10	—
			—
			—



2.

2.1

2.1.1////BU

- 1. BI
- 2. BI
- 3. BI



2.1.2



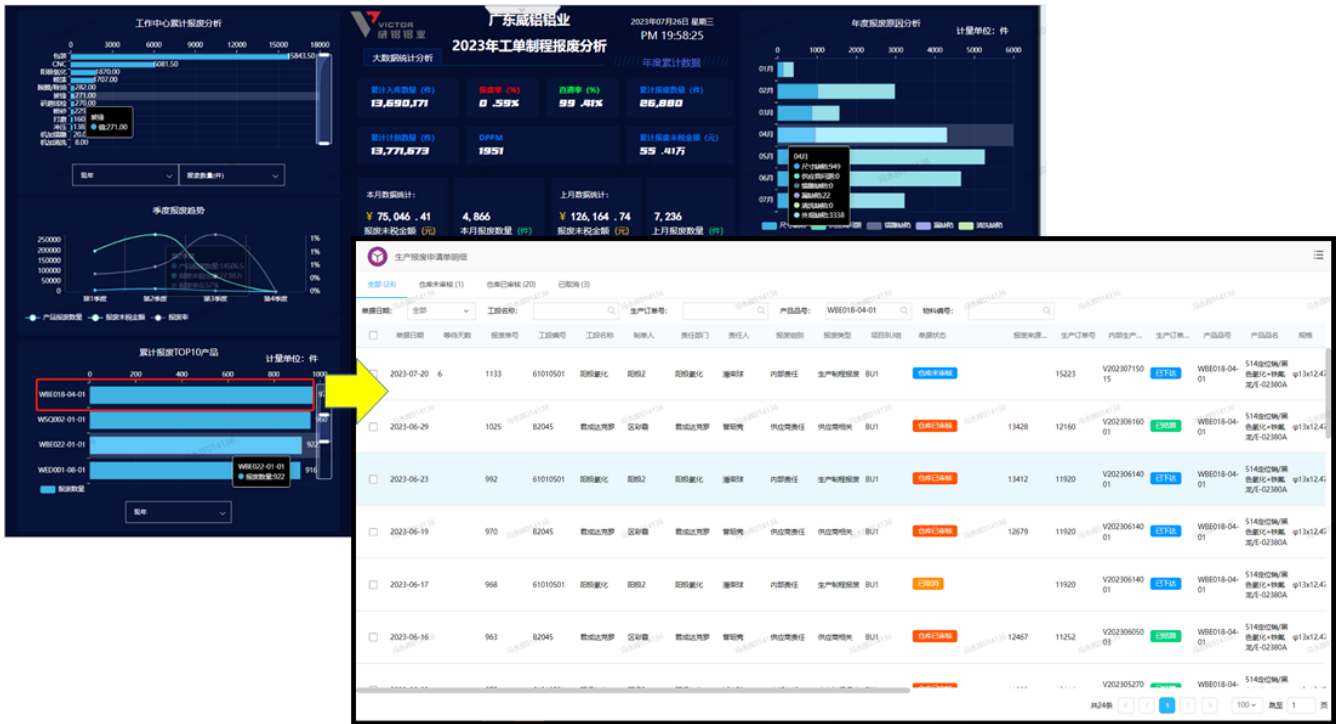
2.1.3



2.2

BI

"WBE018-04-01""WBE018-04-01"



2.3

excel

The image shows a screenshot of a web-based production order management system. The main window displays a list of production orders with columns for status, product code, product name, quantity, and material code. A search bar and filter options are visible at the top. A red arrow points to a search icon, and a blue button labeled '导出' (Export) is highlighted. A yellow arrow points from the '导出' button to an Excel spreadsheet overlay. The Excel spreadsheet shows a detailed table with columns for internal production order number, production order status, product code, product name, specifications, quantity, and material code. The data in the Excel spreadsheet matches the data shown in the system's table.

内部生产订单号	生产订单状态	产品品号	产品品名	规格	产品件数	物料编码
G20230624075	已结算	WSR005-01-01	4AAA变种摄像头/氟化+电泳黑色/E-02326A	25.18x25.18x16.98	22	WSR005-01-Y2
G20230624075	已结算	WSR005-01-01	4AAA变种摄像头/氟化+电泳黑色/E-02326A	25.18x25.18x16.98	427	WSR005-01-Y2
G20230610130	已结算	WSR005-01-01	4AAA变种摄像头/氟化+电泳黑色/E-02326A	25.18x25.18x16.98	163	WSR005-01-Y2
G20230624075	已结算	WSR005-01-01	4AAA变种摄像头/氟化+电泳黑色/E-02326A	25.18x25.18x16.98	2551	WSR005-01-Y2
G20230620022	已结算	WSR005-01-01	4AAA变种摄像头/氟化+电泳黑色/E-02326A	25.18x25.18x16.98	1996	WSR005-01-Y2
G20230619002	已结算	WSR005-01-01	4AAA变种摄像头/氟化+电泳黑色/E-02326A	25.18x25.18x16.98	1000	WSR005-01-Y2
G20230617093	已结算	WSR005-01-01	4AAA变种摄像头/氟化+电泳黑色/E-02326A	25.18x25.18x16.98	2984	WSR005-01-Y2
G20230617092	已结算	WSR005-01-01	4AAA变种摄像头/氟化+电泳黑色/E-02326A	25.18x25.18x16.98	2980	WSR005-01-Y2
G20230610132	已结算	WSR005-01-01	4AAA变种摄像头/氟化+电泳黑色/E-02326A	25.18x25.18x16.98	2163	WSR005-01-Y2
G20230610131	已结算	WSR005-01-01	4AAA变种摄像头/氟化+电泳黑色/E-02326A	25.18x25.18x16.98	458	WSR005-01-Y2

+ +

- BOM
- PMC
- IT or PMO

--