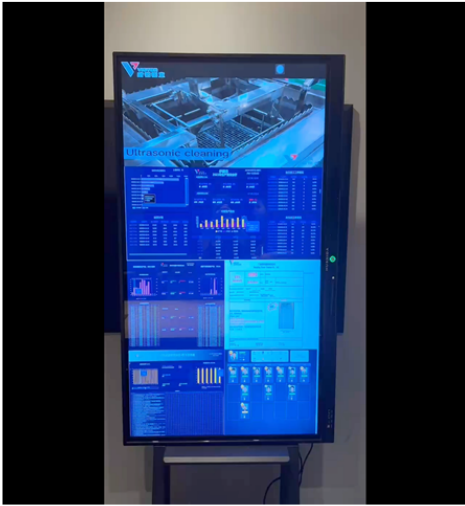


- (SOPSIP)
-
-
-
- LPA()
- ()

松下专线一体化管理看板



Part2. production work order analysis
生产进度分析

Part3. laser carving & leak detection analysis
镭雕&气密测试分析

Part5. Layered Process Audit
LPA分层审核



Part1. process flow video
生产工艺视频

Part4. Quality Alarm
质量警报培训

Part6. work station operator
工位人员看板

可扩展优化，并向其他生产线推广



Part1. process flow video 生产工艺视频



Process flow SOP
全流程生产作业指导



Part2. production work order analysis 生产进度分析





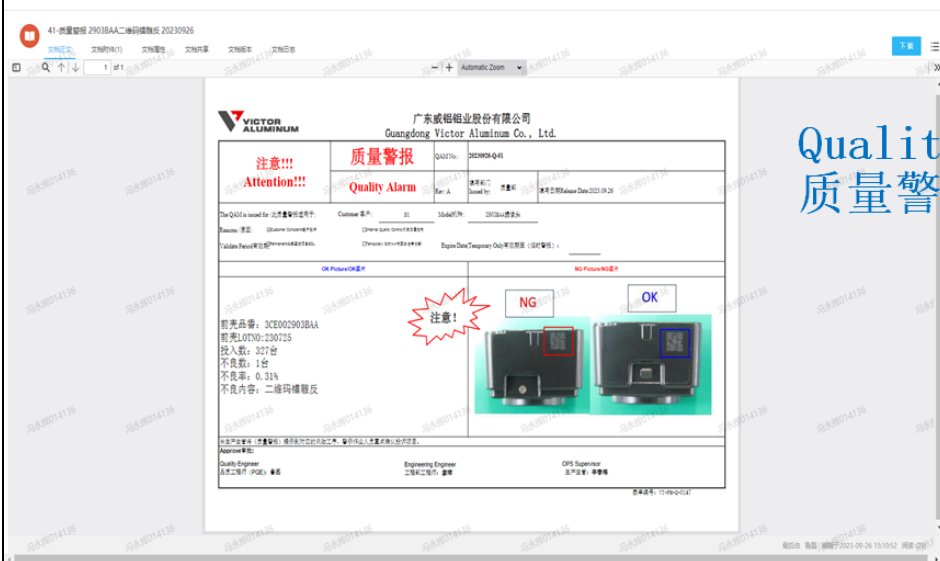
Part3. laser carving & leak detection analysis 镭雕&气密性测试分析



test data acquisition and analysis
设备测试数据监测



Part4. Quality Alarm 质量警报培训



Quality Alarm Training
质量警报培训

